



Aspose.Words



GERMO GmbH

Aspose.Words for JAVA and winEFW search module Case Study
Manuel Kipke, February 2009

Product Background / Overview

GERMO GmbH offers a variety of software solutions in the field of electronic forms, output management and document management for health insurance funds. The software suite winEFW (windows Elektronisches Formularwesen, german for windows electronic template management) offers template management, template creation and administrative functions as well as functions for document creation. To support template administrators during their workflow, winEFW includes a search module providing a great variety of search options for template administrators and editors. The search includes full text search as well as search for bookmarks or document properties within Microsoft Word documents and templates.

The search module was originally written in C++ using COM to access the templates. Within the product lifecycle the customer's template portfolio increased from a few hundred templates to more than 3000 templates by now. The increasing numbers of templates led to an unacceptable deterioration within the search process.

Requirements Scenario

Within a product upgrade, GERMO GmbH decided to reengineer the search module from scratch as a JAVA desktop application. In order to fulfill the customer requirements, the search module must provide the following functions:

- significantly improved search performance
- access to the content of the template or document
- access to the bookmarks of the templates
- access to the custom document properties
- moderate hardware requirements
- independency from a Microsoft Word installation

Solution Implementation

The evaluation of the available libraries showed that ASPOSE.Words matches our requirements perfectly. ASPOSE.Words is used to extract textual content from our customer templates as well as bookmarks or custom document properties. The significant increase in processing speed allows our customers to retrieve their requested information in a very efficient way and therefore gain a great increase in performance.

Benefits

ASPOSE.Words offers a smart solution to implement document access within applications and supports the developers with a widespread documentation and comprehensive source examples.

ASPOSE.Words provides an excellent performance leaving the current COM-based implementation far behind.

As ASPOSE.Words also exists in a .NET version, potential migrations to .NET can be handled easily.

Future Implementations

GERMO GmbH is currently developing tools for server side creation of form letters using ASPOSE.Words and ASPOSE.Pdf within a .NET environment. During the evaluation phase, Aspose provided a very fast document creation process. Therefore, GERMO GmbH decided to use Aspose tools for ancillary products.

Conclusion

By using ASPOSE.Words we achieved major progress in our daily work and we therefore highly recommend it to prospective customers.

Screenshots

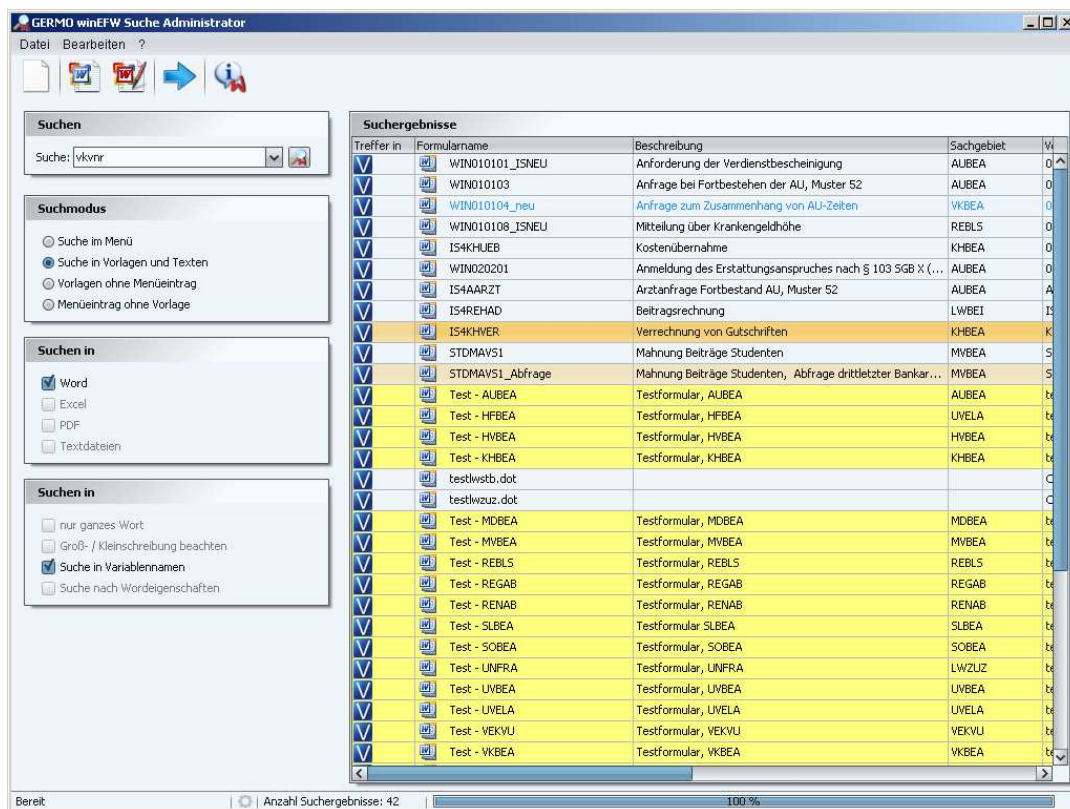


Fig. 1: Result of a search operation



Fig. 2: Aboutbox