



Aspose.Total for .Net

KWizCom

Integrating a central printing solution for SharePoint files

Shai Petel, VP R&D, KWizCom Corp., April 6st 2010



Product Background / Overview

iMUSH is a bundle of products for SharePoint that enable users to perform tasks on a bunch on items at once.

iMUSH includes the following solutions for SharePoint: Scan, **Print**, Files and Reports

iMUSH-Print will enable users to collect several documents and web forms from SharePoint and combine them into one printable file, allowing them to save it for later or send it to the printer.

Requirements Scenario

iMUSH-Print will allow users to collect several documents from different formats and merge them into one file. For that, we need a strong, reliable and fast server-side conversion tool that can convert documents in-memory from one format to another, and merge them into one large PDF/XPS file for a print-preview.

Since we are working on the server side, as we wish to support any client OS/Browser combination and as SharePoint-files are not stored in the file system but in a database, it is important for us to use in-memory conversion without the need to work with the local file system.

As an ISV, our target audiences are simple-click install solutions we cannot require many server side components or many configurations or not many IT specialists would use our products. As well as we should support any type of server configuration / platform that our customers may have.

The scenarios we support in iMUSH-Print are:

1. To any document library or sub folder, add a print menu with the following options:
 - a. Print all documents in this folder, or print selected documents
 - i. Print the documents alone
 - ii. Print the documents properties
 - iii. Print both the documents and their properties
 - b. Print all documents properties in a table
2. To any list or sub folder in a list, add a print menu with the following options:
 - a. Print all items in this folder, or print selected items
 - i. Print the items properties
 - ii. Print the items attachments

- iii. Print both the items properties with their attachments
 - b. Print all items properties in a table
- 3. To any list item, add a print menu with the following options:
 - a. Print the item properties
 - b. Print the item attachments
 - c. Print both the item properties with their attachments
- 4. To any document, add a print menu with the following options:
 - a. Print the documents alone
 - b. Print the documents properties
 - c. Print both the documents and their properties

Note: Documents and attachments may be of any type, including images, PDF, office documents, html, InfoPath, and more.

Once the user had selected the content he wished to print, he should then see a print preview file which he then could send to his printer.

Solution Implementation

We have implemented a feature for SharePoint that registers print menu items into the document library, list and view item forms.

Once installed, it allows for any site collection owner to activate the iMUSH-Print feature which will add these menu items and allow all users to start working with the product.

Using Aspose.Total for .NET we were able to have our ASP.NET application resides in SharePoint and convert documents from various formats into PDF in memory, without the need for access to the server's file system and with no IO overhead.

Aspose was one of the only solutions that supported even our most advanced configuration scenarios while having no server configuration requirements at all, and not requiring Office on the server while providing excellent results in Office document conversions.

Benefits

Before Aspose, we implemented a solution that relied on Office 2007 to be installed on the server and had to connect to its COM objects for the conversion.

The problems were massive, such as:

1. Configuring COM+ access for any application pool user
2. Office limitations on performance and lack of threading support
3. Extremely slow and heavy conversion process
4. Lots of IO work with the file system, having to save tmp files before and after conversion
5. And more

By using Aspose we were able to eliminate any configuration problems we had with the other solution and now we do not require our customers to install office on the server!

Not only that but using Aspose.Total for .NET we increased our performance by more than 100% and reduced our file-system IO to nothing.

Future Implementations

Aspose platform supports much more than what we bargain for.

As a leading ISV, KWizCom is always releasing innovative solutions for SharePoint.

Our experience in the past with other leading providers such as Telerik showed us that by leveraging the best platforms for development – we will always be a step ahead our competition, as it opens the door for many new products.

Our next step will be to implement Export to PDF to many of our existing products such as Calendar Plus and List Aggregator. Many customers requested this feature so far.

Conclusion

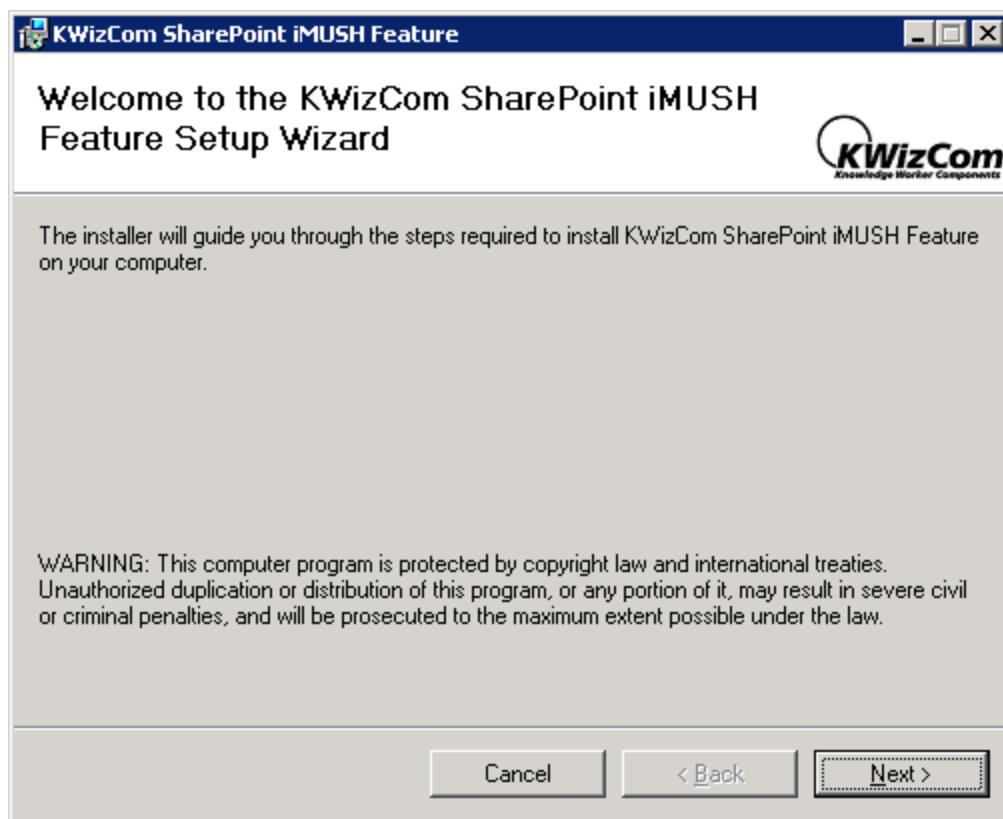
Although our products is in early beta stages, by using Aspose.Total for .NET we were able to deliver high quality solution while saving valuable development time.

Integration with Aspose was lightning fast. In less than couple of hours we had all our test cases converted to Aspose and working even better than before!

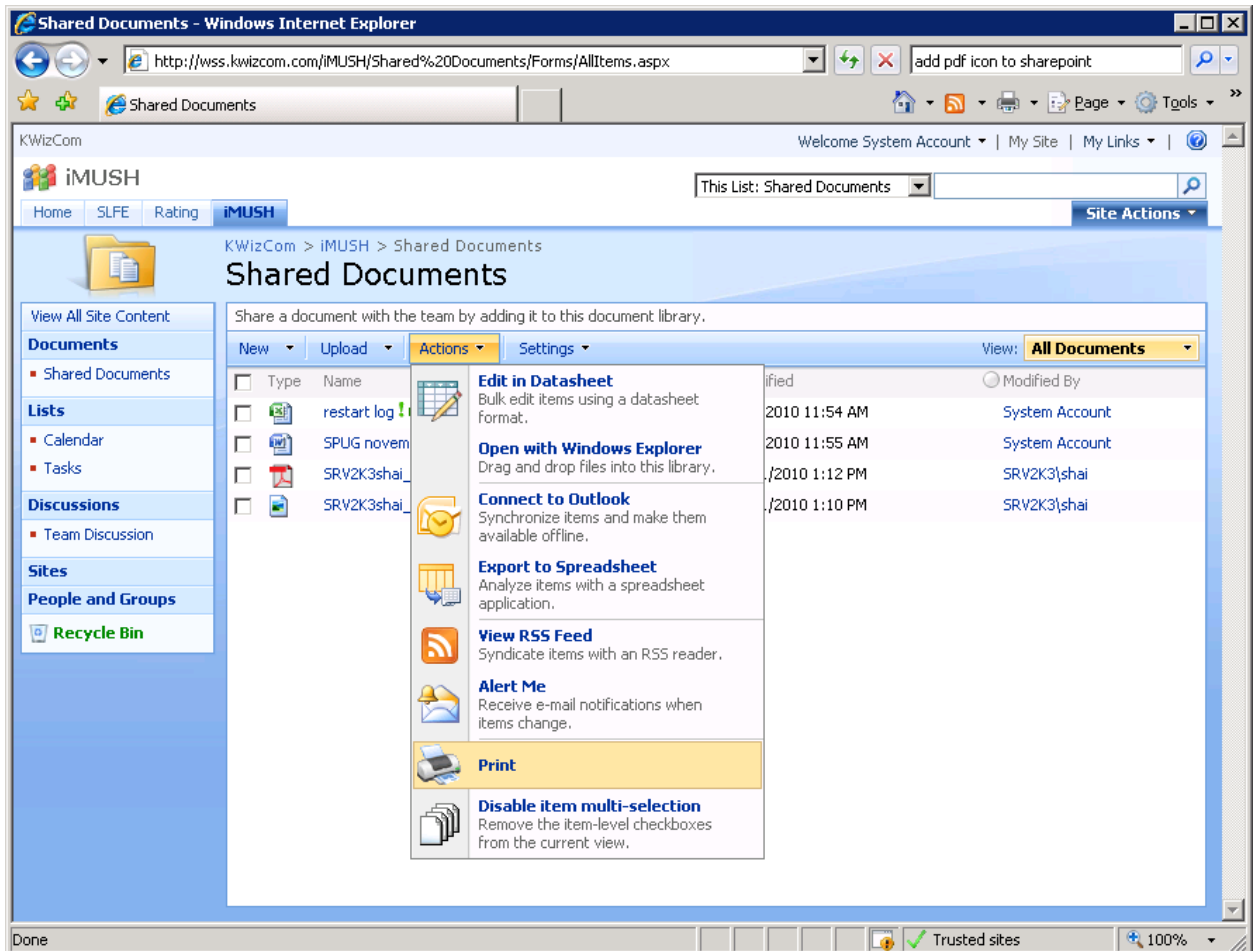
That said it was made clear to us the ROI on Aspose.Total for .NET will be swift and certain.

Screenshots

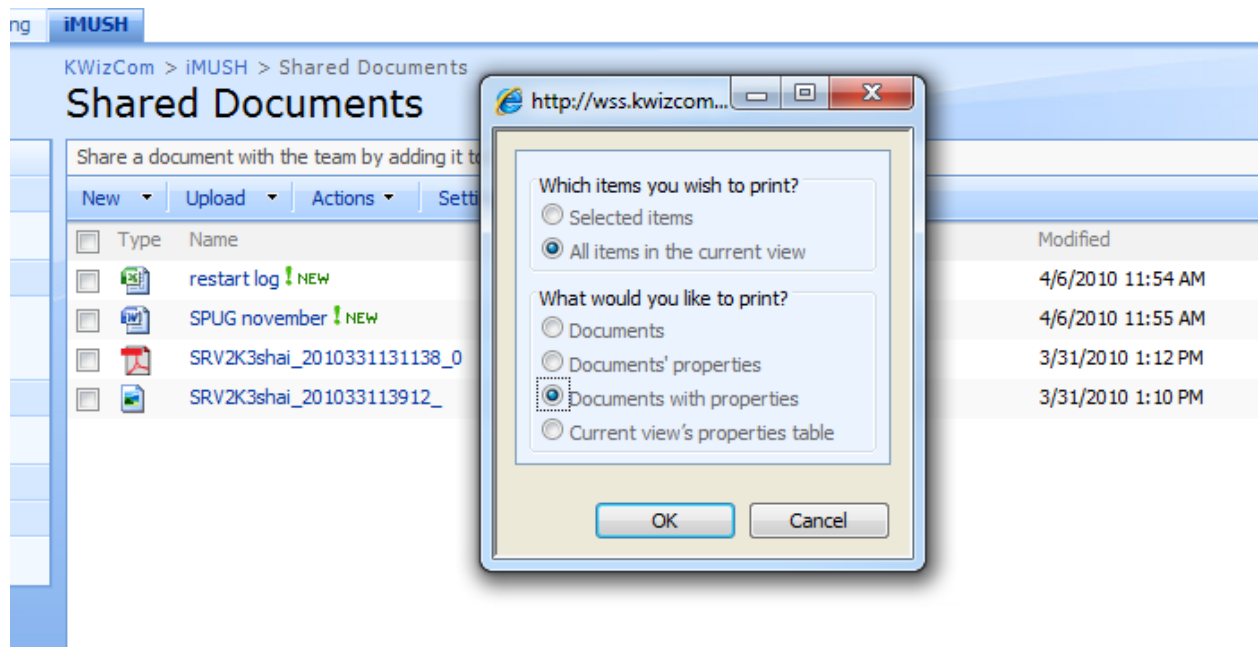
Beta version screenshots:



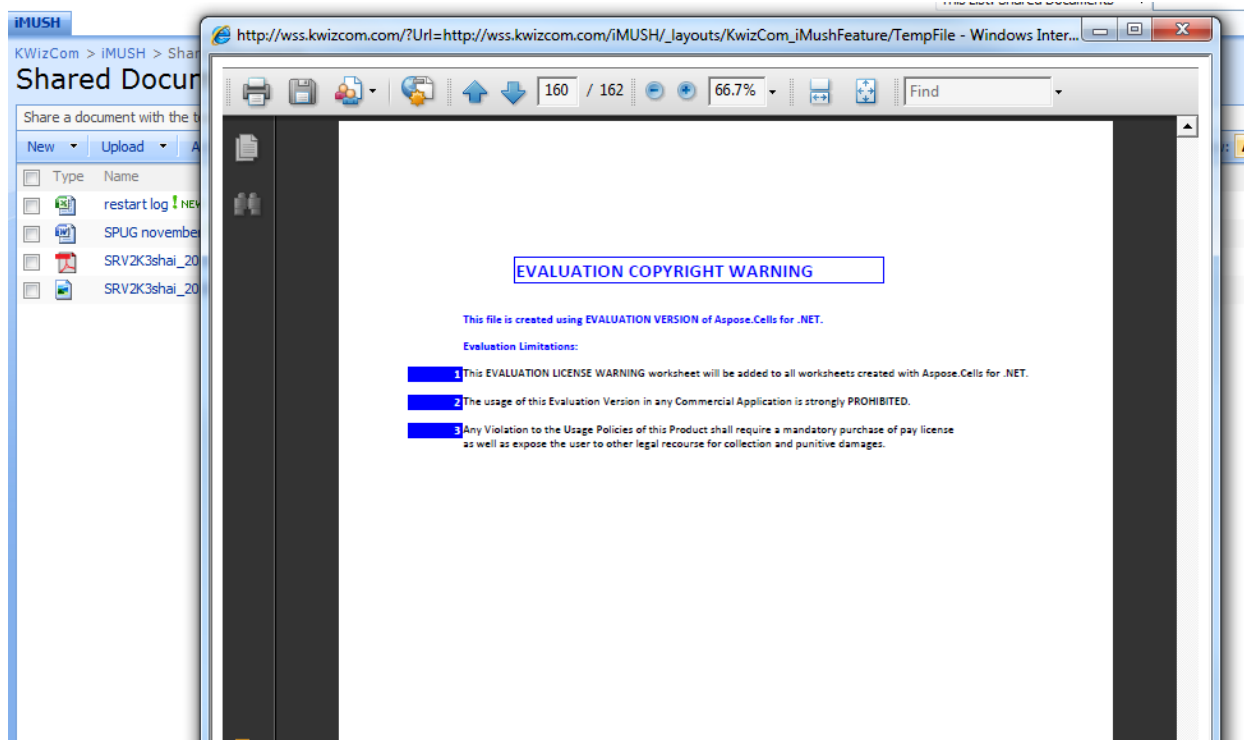
iMUSH bundle installation



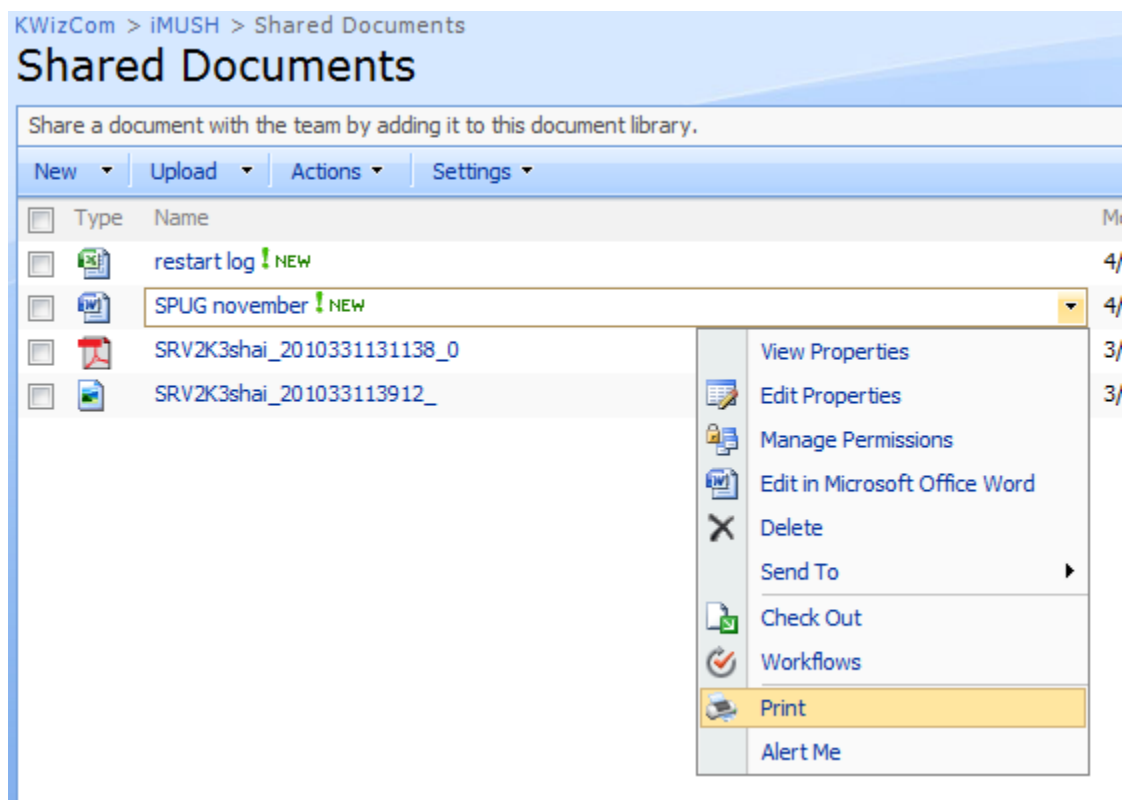
Document library print menu



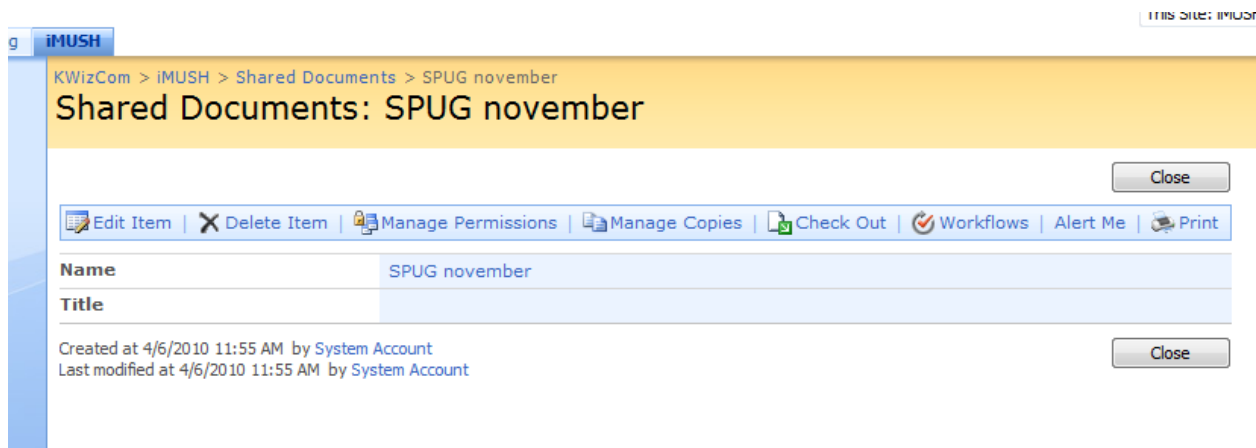
Document library print settings popup



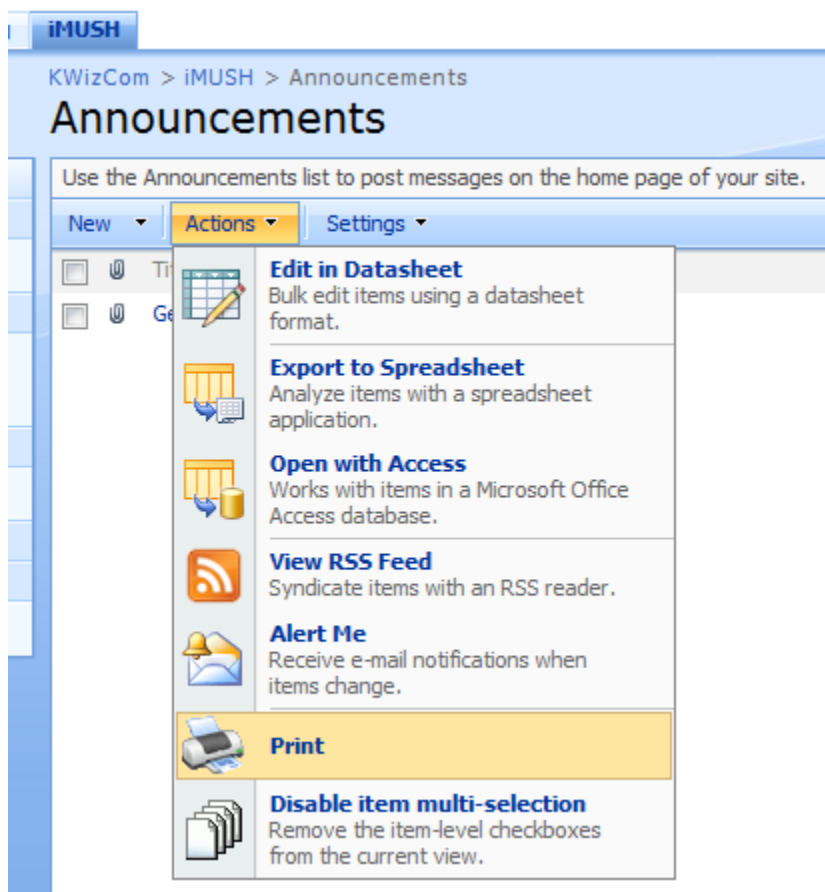
Get the PDF ready for print



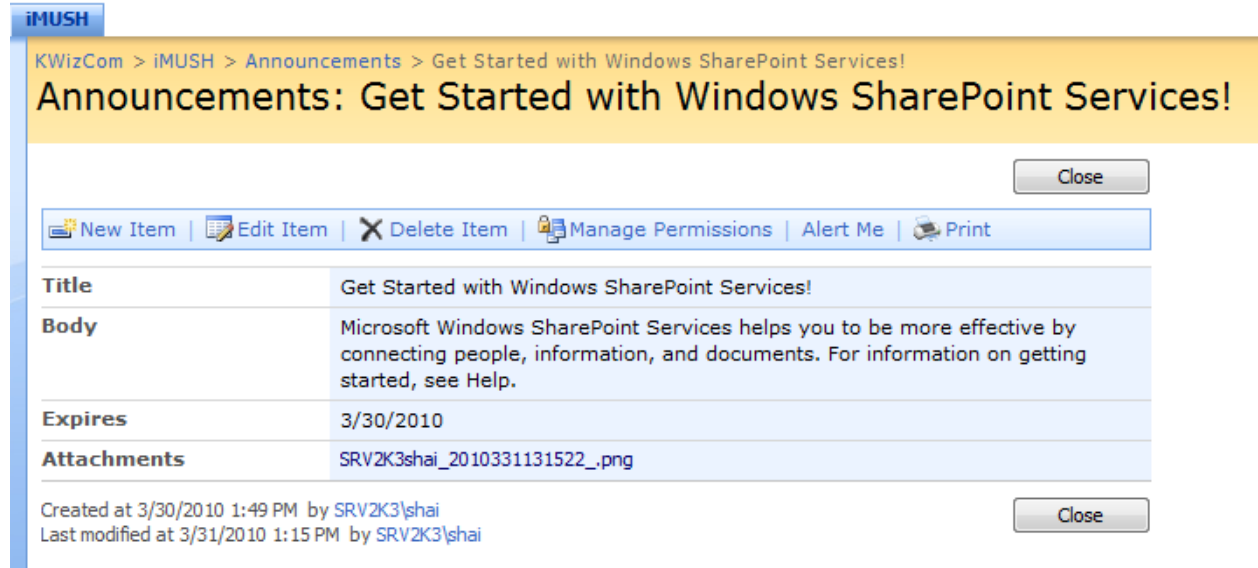
Document context menu print



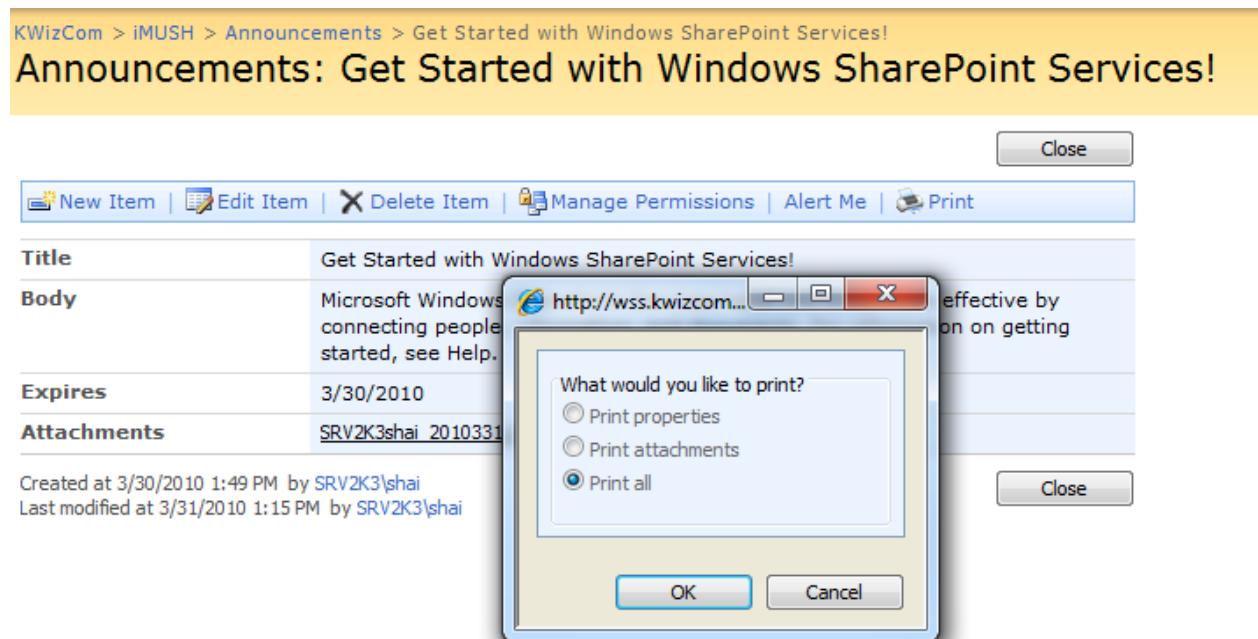
Document properties tool bar print



List toolbar print menu







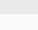
List item toolbar print menu



List item toolbar print menu popup

KWizCom > Site Settings > Site Features

Site Collection Features

Name	Status
 Collect Signatures Workflow Gathers signatures needed to complete a Microsoft Office document.	<input type="button" value="Deactivate"/> <input checked="" type="button" value="Active"/>
 Disposition Approval Workflow Manages document expiration and retention by allowing participants to decide whether to retain or delete expired documents.	<input type="button" value="Deactivate"/> <input checked="" type="button" value="Active"/>
 KWizCom iMUSH - Files Information Management Utilities for SharePoint (iMUSH) provides set of utilities that enhance the work with documents and records in SharePoint. iMUSH - Files provides support for advanced file function for documents and lists.	<input type="button" value="Activate"/>
 KWizCom iMUSH - Print Information Management Utilities for SharePoint (iMUSH) provides set of utilities that enhance the work with documents and records in SharePoint. iMUSH - Print provides support for advanced printing for documents and lists.	<input type="button" value="Activate"/>
 KWizCom iMUSH - Scan Information Management Utilities for SharePoint (iMUSH) provides set of utilities that enhance the work with documents and records in SharePoint. iMUSH - Scan streamlines the document scanning and uploading to SharePoint process.	<input type="button" value="Activate"/>

KWizCom iMUSH SharePoint Features, including files, print and scan