



Aspose.Words



Addatech Systems – ClinicMaster

Aspose.Words Implementation Case Study

By Giovanni Palmiotto, MCP .NET

Product Background

Addatech ClinicMaster is a comprehensive, practice management tool that allows users to be in complete control of every aspect of their clinic. **ClinicMaster** boasts the following features:

- A comprehensive scheduler.
- Detailed billing.
- Referral management system.
- Cancellation reductions.
- Improved patient communication.
- Business process streamlining.
- Data consolidation.
- Administrative cost reductions.
- Productivity, workload, and treatment tracking.

Requirements Scenario

A common feature requested by many **ClinicMaster** (<http://www.clinicmaster.ca>) users is the ability to quickly merge Microsoft Word documents with data residing in the primary database. The majority of documents are official government forms which require electronic submission and must be archived for audit purposes. A solution which would meet this requirement in a cost effective and efficient manner was necessary. Amongst the platforms considered, the following were the top contenders:

- **Aspose.Words**
- Microsoft Office Automation
- Microsoft Office Primary Interop Assemblies (PIA)
- Microsoft Visual Studio 2005 Tools for Microsoft Office (VSTO)

Solution Implementation

Having performed extensive research as well as numerous performance and analysis metrics, Aspose.Words was chosen as the undisputed winner. Using the Aspose.Words Mail Merge Engine, ClinicMaster now creates merged documents with incredible speed and accuracy. This functionality is now an integral part of ClinicMaster and has been implemented throughout the product suite. Generating documents is as easy as right-clicking a data source entity (dossier, patient, service, therapist), selecting a document (template), and saving the merged document.

Benefits

Aspose.Words is a lightweight, .NET component and, as such, takes full advantage of the many benefits offered by the .NET Framework such as managed code execution, garbage collection, structured exception handling, and security features. **Aspose.Words is completely independent of Microsoft Word** and, as a result, is a cost effective solution as it eliminates expensive licensing requirements.

Other key features of **Aspose.Words** include the following:

- Superior performance.
- Scalable architecture.
- Minimal learning curve.
- Comprehensive documentation.
- Detailed C# and VB.NET code samples.
- Intuitive installation process.
- Simple deployment model (XCopy).
- Royalty free distribution (Developer OEM Subscription)

Future Implementations

Addatech Systems is currently exploring the possibility of combining Aspose.Words, Aspose.Pdf, and Aspose.Pdf.Kit to provide mail merge functionality for Adobe PDF files. In view of the fact that Aspose.Words was designed to scale to web server and web service contexts, it is also being considered for implementation in the upcoming ClinicMaster Web Portal (ASP.NET 2.0) as well as web based, data consolidation modules. These implementations will allow users to dynamically create merged documents (invoices, appointment reminders, confirmations, reports, etc.), using templates and data warehoused on remote Microsoft SQL Server 2005 databases. When combined with web services and COM Interoperability, Aspose.Words allows the developer to architect solutions which bridge legacy systems with their modern counterparts.

Conclusion

Developing, debugging, and deploying Office Automation, PIA, and VSTO based solutions can be a daunting task; even for the experienced developer. Fortunately, this is not the case with **Aspose.Words**. Within minutes, developers will be well on their way to harnessing the full power of **Aspose.Words** including mail merge functionality, dynamic document creation, and content manipulation; each of these aspects is fully entrusted to the developer.

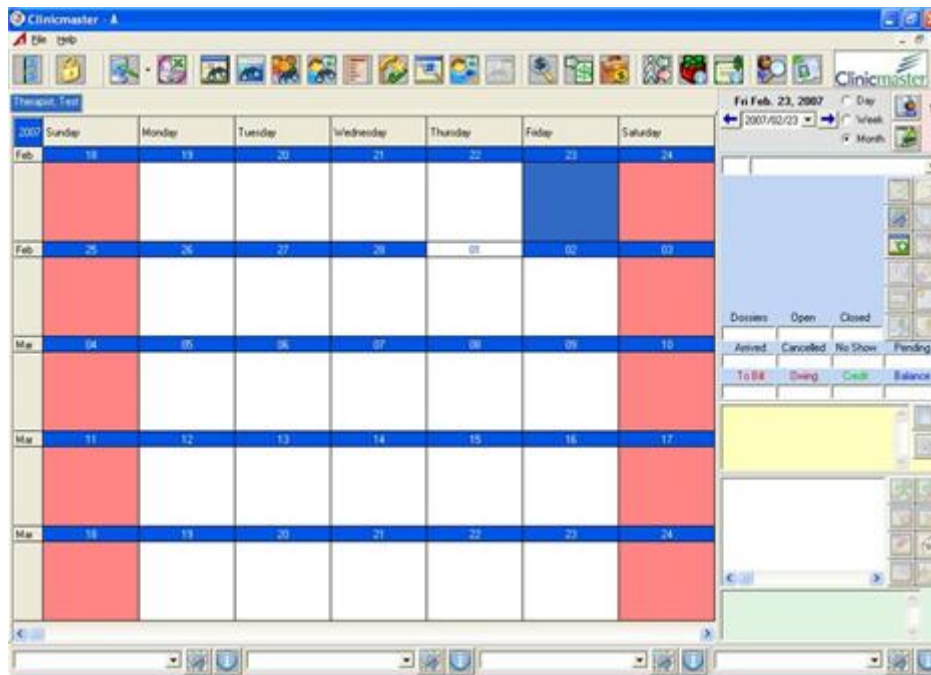
Aspose provides some of the best technical support in the business – prompt, professional, attentive and innovative. When coupled with constant product updates, forums, blogs, knowledgebase, online documentation, updated code samples, flexible licensing model, free product upgrades, and reasonable pricing, choosing

Aspose.Words is the only choice.

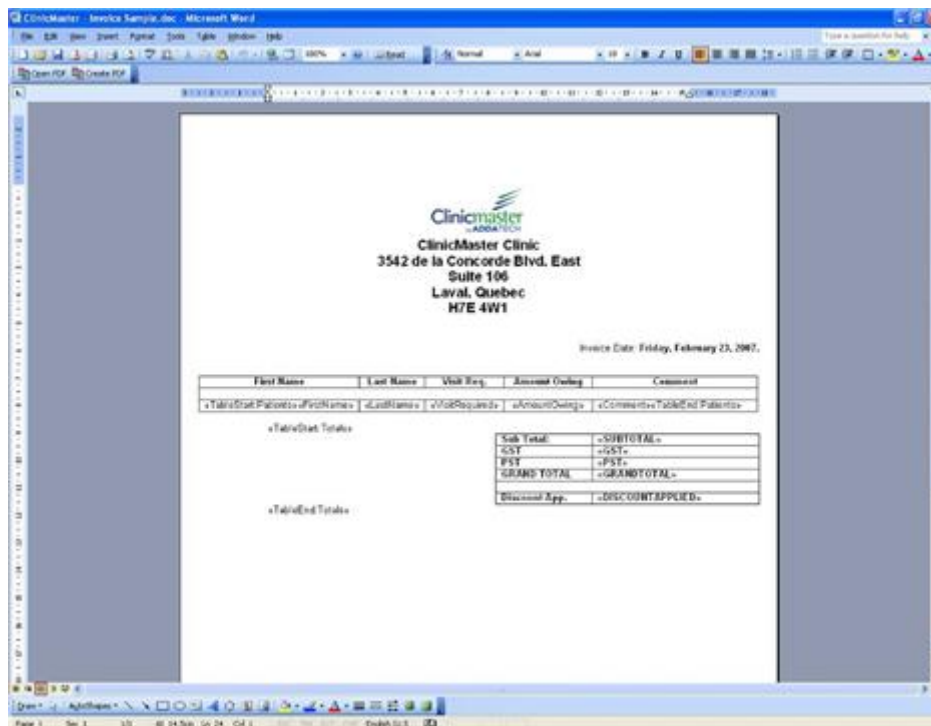
Giovanni Palmiotto, MCP .NET

February 2007.

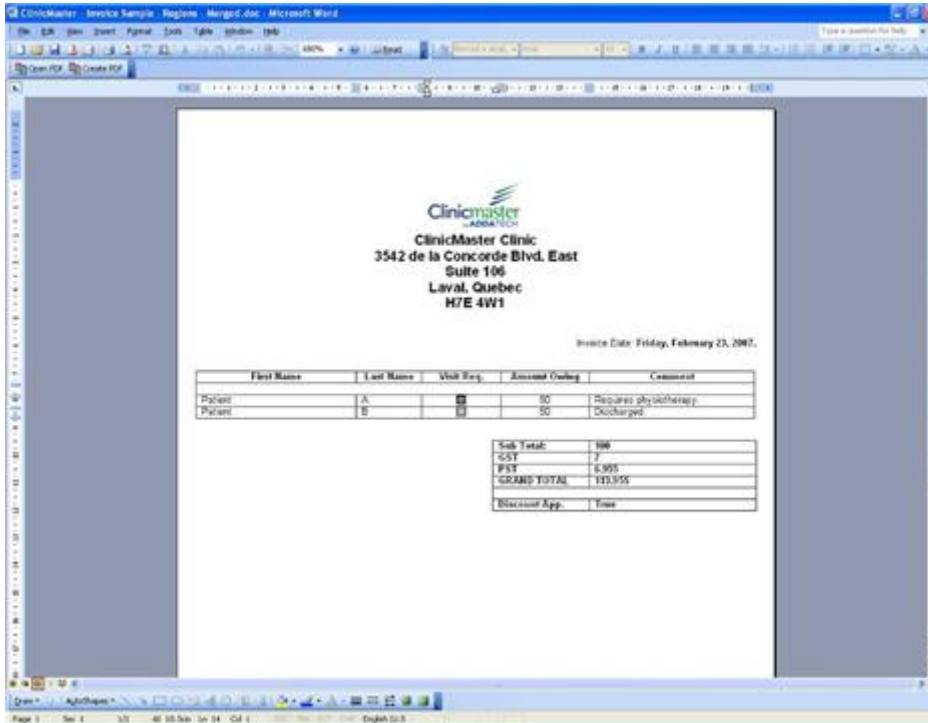
February 2007.



ClinicMaster Control Center



Templates are designed in Microsoft Word, using standard mail merge fields.



Microsoft Word shows a document generated by Aspose.Words. Notice that the table grew and checkboxes were inserted during mail merge.